



Models- 11000 Shampoo & Spot Remover
12000 Shampoo/Spot & Fragrance
13000 Fragrance
16000 Tire Shine

Page 2 - Product Information
Page 3 - Product Dimensions
Page 4 - Specifications
Page 5 - Important Safety Instructions
Page 6-7 Installation
Page 7-10 Programming
Page 10 Operating
Page 11 Maintenance
Page 11-12 Troubleshooting
Page 13-28 Parts List & Wiring Diagrams



PRODUCT INFORMATION

Please take a moment to fill out the information below in order to aid us with any future sales or service inquiries. Model number and serial number information can be found on the serial tag located inside the control box and/or on the lower exterior of the can. Key number can be found on the tag that comes attached to the keys. There may be more than one key number depending on unit.

Please keep this information with your records.

MODEL#: _____

SERIAL#: _____

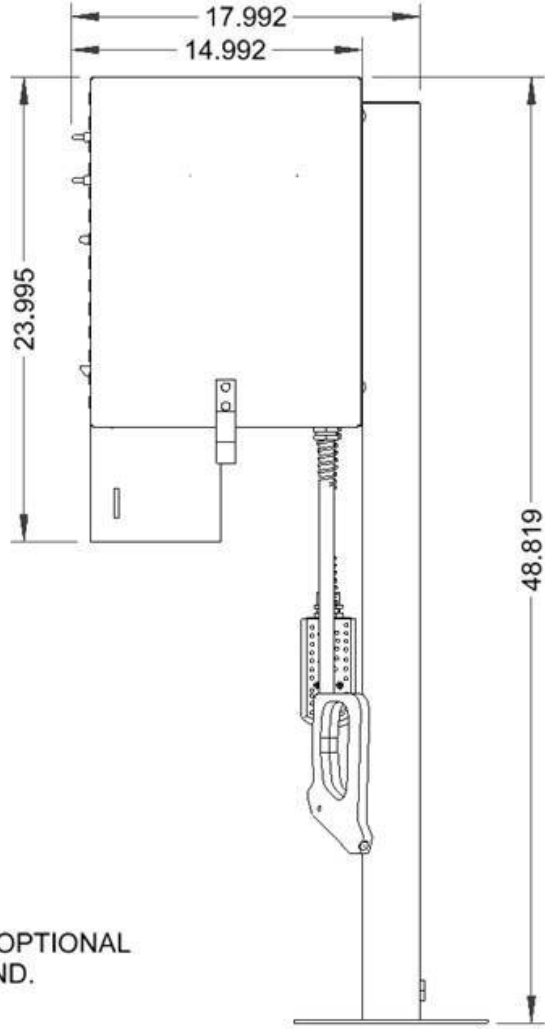
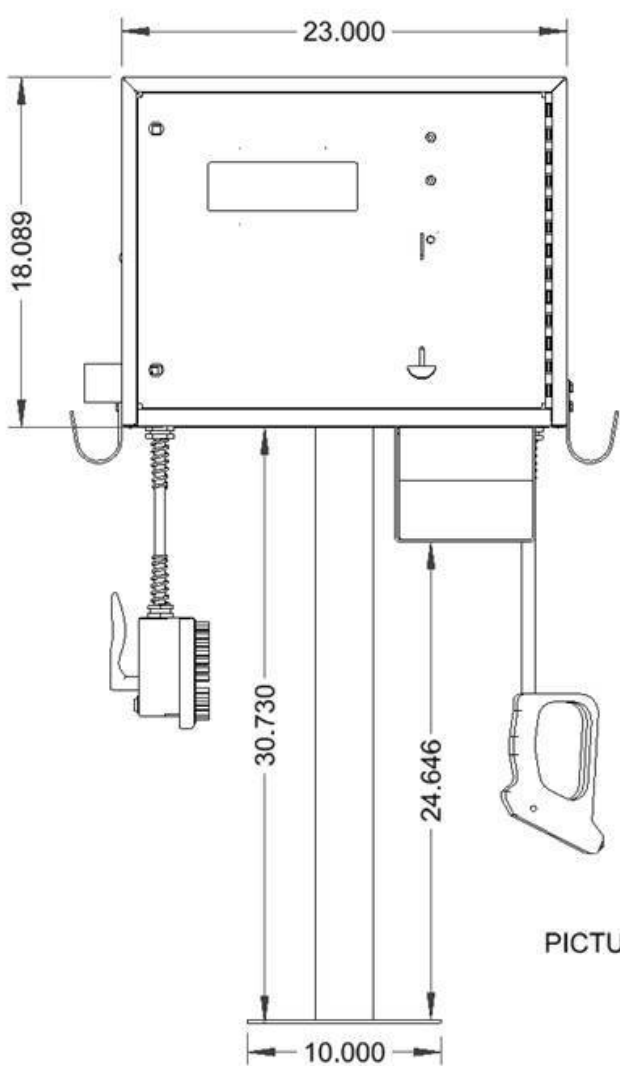
KEY NUMBER(S): _____

DATE PURCHASED: _____

DISTRIBUTOR: _____

**J.E. Adams Industries
1025 63rd Ave. S.W.
Cedar Rapids, IA 52404
1-800-553-8861
www.jeadams.com**

PRODUCT DIMENSIONS



PICTURED WITH OPTIONAL
8819 STAND.

Specifications

120 Volt models

<u>Unit specifications:</u>	11000 Shampoo, 12000 Shampoo & Fragrance, 13000 Fragrance, 16000 Tire Shine
Voltage:	120vac, 60hz
Amperage:	(1) 10 amp service is required for this unit
Compressor:	1/12 HP, 120vac, 60hz, 10A fuse
Peristaltic pump:	Peristaltic pumps, 12VDC
Weight:	150 lbs packaged

Fluid specifications

Shampoo & Spot Remover - 1 gallon each*, dispenses 2.5 gallons of foam per minute or 1 oz of fluid per minute.

Fragrance – 1 gallon of each*, dispenses ¾ oz. in 30 seconds.

Tire Shine – 1 gallon container, dispenses ¾ oz. in 30 seconds.

* Due to space constraints, 12000 combo machine has ½ gallon dispensing jugs inside of cabinet.

220 Volt models

<u>Unit specifications:</u>	11000-220V Shamp, 12000-220V Shamp & Frag, 13000-220V Frag, 16000-220V Tire Shine
Voltage:	220vac, 50hz
Amperage:	(1) 6 amp service is required for this unit
Compressor:	1/12 HP, 220vac, 50hz, 10A fuse
Peristaltic pump:	Peristaltic pumps, 12VDC
Weight:	150 lbs packaged

NOTE: “UNIT INTENDED FOR COMMERCIAL USE ONLY”

IMPORTANT SAFETY INSTRUCTIONS

When using an electrical appliance, basic precautions should always be followed, including the following:

READ ALL INSTRUCTIONS BEFORE USING (THIS APPLIANCE)

WARNING – To reduce the risk of fire, electric shock, or injury:

- Use only as described in manual. Use only manufactures recommended attachments.
- Do not allow to be used as a toy. Close attention is necessary when used by or near children.
- Do not put any object into openings. Do not use with any opening blocked; keep free of dirt and anything that may reduce flow.
- Keep hair, loose clothing, fingers, and all parts of body away from openings and moving parts.
- Do not use near flammable or combustible liquids, such as gasoline, or use in areas where they may be present.
- Do not use near anything that is burning or smoking, such as cigarettes, matches, or hot ashes.
- Do not spray of the chemicals on dashboard, instrument area, consoles, door panels, etc. Decorative trim pieces such as these can become damaged from contact with chemicals.

SAVE THESE INSTRUCTIONS

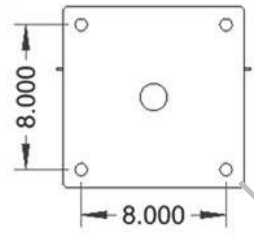
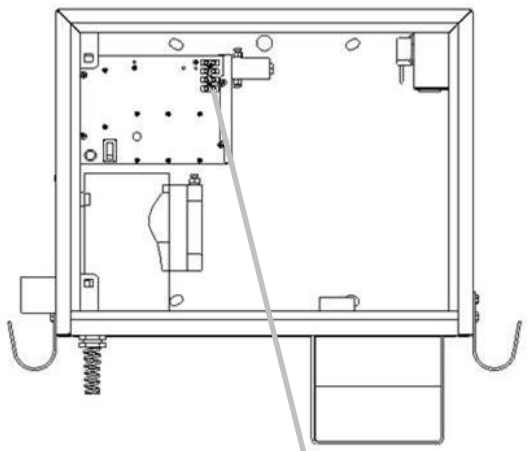
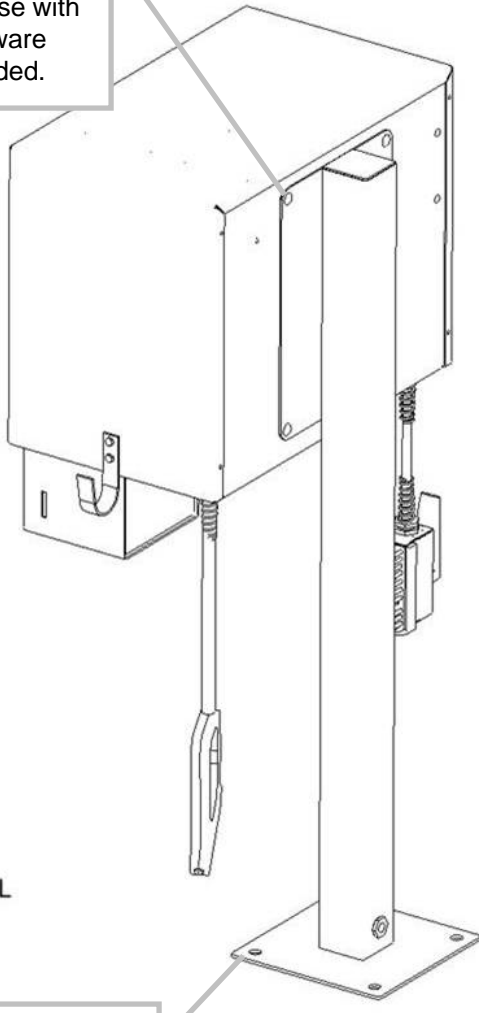
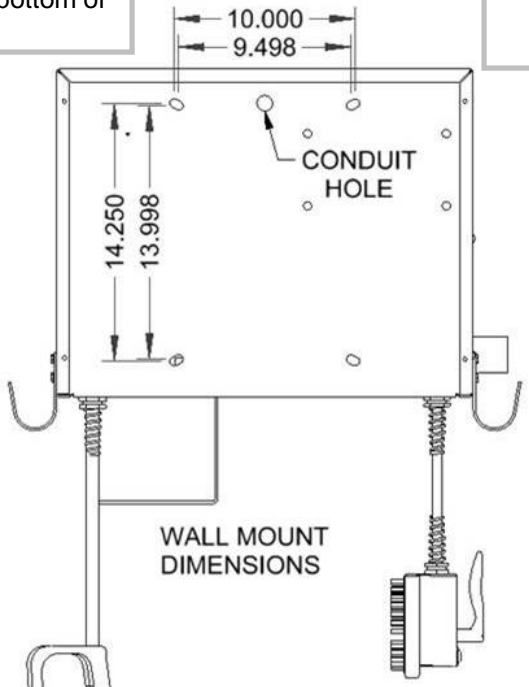
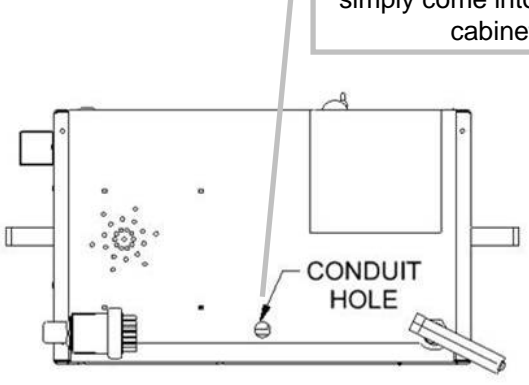


- **Installation Instructions:**
- Determine location to mount unit (“**DANGER**” “**THIS EQUIPMENT INCORPORATES PARTS SUCH AS SWITCHES, MOTORS, OR THE LIKE THAT TEND TO PRODUCE ARCS OR SPARKS THAT CAN CAUSE AN EXPLOSION. WHEN LOCATED IN GASOLINE-DISPENSING AND SERVICE STATIONS INSTALL AND USE AT LEAST 20 FEET (6 M) HORIZONTALLY FROM THE EXTERIOR ENCLOSURE OF ANY DISPENSING PUMP AND AT LEAST 18 INCHES (450 MM) ABOVE A DRIVEWAY OR GROUND LEVEL.**”
- Run electrical service to that location (*NOTE UNIT HAS WIRE PROVIDED UNDERNEATH TO CONNECT INCOMING POWER SUPPLY*)
- **Grounding Instructions:** This appliance must be connected to a grounded metal, permanent wiring system; or an equipment-grounding conductor must be run with the circuit conductors and connected to the equipment-grounding terminal or lead on the appliance.
- All local and national electric codes must be followed for installation and use.
- Licensed electricians are recommended for installation.

Installation:

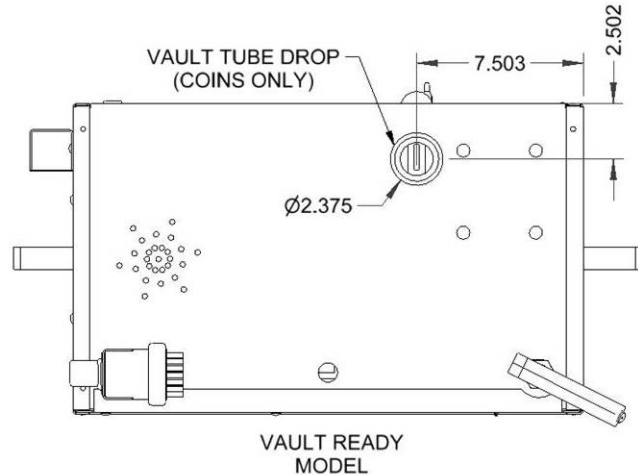
Power into cabinet can run through 8819 base or simply come into bottom of cabinet.

Attach cabinet to 8819 base with hardware provided.



8819 PEDESTAL MOUNT

Drill holes and attach with concrete bolts (5/16 recommended).



Once unit is installed, fluids can be added to the unit. The 12000 Shampoo/Fragrance combo machine will need to use the half gallon containers rather than the full gallon containers. Now the unit can be turned on and programmed. **NOTE: Upon startup of the machine, all fluid lines will need to be primed to rid the lines of air.**

Programming Instructions:

Coin acceptor:

No programming to acceptor needed if unit was purchased with the standard Imonex Z32 electronic acceptor (8149-92 our part number) is pre-programmed to accept US quarters, .984 tokens, US \$1 coin and 1.073 token. Acceptor is pre-programmed before it is sent to J.E. Adams.

If different acceptor was purchased, see additional literature sent along with unit for programming info.

Bill acceptor:

Bill acceptor comes pre programmed from J.E. Adams and should not require any changes. If additional programming is needed to acceptors please refer to additional literature sent along with this unit.

Display:

Unit may be programmed when received depending on information given at that the time of order.

To program follow the instructions below.

LED 9 Timer functions by model			
	Sham/Spot	Fragrance	Tire Shine
11000	Function A		
12000	Function B	Function A	
13000		Function A	
16000			Function A

Display programming with remote:

- 1) Press the red power button.
- 2) Timer will display 0000. At this time type in 4 digit access code. Note code will be 1234 until changed by customer.
- 3) Once code has been entered display should read ok. If display does not read ok, repeat step 1 and 2.
- 4) Press **CH +** button. Timer will display coin value. This should \$.25 and should not be changed.
- 5) Press the **CH +** button. Display will now read (**A: 30**) or may be a different time. (**A**) Will be the time per coin for Function A. Set desired time per coin by using the **VOL -** to decrease or the **VOL +** to increase. Once time is entered move to next step.
- 6) Press the **CH +** button. Display will now read (**B: 30**) or may be different time. (**B**) Will be the time per coin for Function B. Set desired time per coin by using the **VOL -** to decrease or the **VOL +** to increase. Once time is entered move to next step.
- 7) Press the **CH +** button. Display will now read (**C: 30**) or may be different time. (**C**) Will be the time per coin for Function C. Set desired time per coin by using the **VOL -** to decrease or the **VOL +** to increase. Once time is entered move to next step.
- 8) Press the **CH +** button. Display will now read **D**. **D** is not used.
- 9) Press the **CH +** button. Display will now read **E**. **E** is not used.
- 10) Press the **CH +** button. Display will now read **F**. **F** is not used.
- 11) Press the **CH +** button. Display will now read (on A). This is the number of coins to start Function A. Use the **VOL -** and **VOL +** to adjust. Once this is done press the **CH+** button and repeat for (B) and (C).
- 12) Press the **CH +** button. Display will read bonus time. Set if desired. See explanation at the end programming instructions.
- 13) Press the **CH +** button. Display will debit mode. Set if desired. See explanation at the end programming instructions.
- 14) Press the **CH +** button. Display will delayed start. Set if desired. See explanation at the end programming instructions.
- 15) Press the **CH +** button. Display will read **HLxx**. Set if desired. See explanation at the end programming instructions.
- 16) Press the **CH +** button. Display will read Restart off or restart on depending on what is set. Restart off will require a person to put in full amount after unit is turned off to reactivate. Restart on allows for additional coins to be put in the machine to keep unit running. To set use **VOL -** or **VOL +** to change.
- 17) Press the **CH +** button. Display will now read **STD** or **USER** or **MIX**. To make a custom message use **VOL +** button to scroll to **USER**. At this point press and hold **CH +** button until original message appears. At this time you may change the message simply by using the **VOL -** or **VOL +** buttons to change letters. **Once message has been entered you must put the symbol / at the end of message.** This will tell display that this is the end of the message.
- 18) Press the **CH +** button now 5 more times to exit programming.
- 19) Unit should now be programmed.

Program definitions:

Bonus time settings:

- Amount of time set in bonus time is added to regular time per coin/pulse(e.g. if you want to give 45 seconds for bonus time and your regular time per coin is 30 seconds, you would set bonus time at 00:15)
- Bonus is disabled by setting bonus time to 00:00.
- If bonus time is set to less than one minute, bonus time is added when bonus coin is reached and every coin after that until time expires.
- If bonus time is set at 1:00 or more, bonus will be a “one time” bonus. Bonus time will only be added for bonus coin or multiples of bonus coin (e.g. 16th coin, 32nd coin, etc). Any other coin will on receive regular time per coin.
- If bonus time is set to 99:00, when bonus coin is deposited, timer will show “-on-“ and timer will continue to run until coin switch wire is shorted to ground by a loop detector or other switch closure for a minimum of two seconds.

Debit and credit mode:

- Debit mode: As coins are deposited display shows “\$1.75 MORE, \$1.50 MORE, \$1.25 MORE” etc. until start price is reaches. Once start price is reached display switches to time accumulating until no more coins have been deposited.
- Credit mode: As coins are deposited display shows money accumulating (\$.25, \$.50, \$.75 etc). If timer is also set to delayed start mode timer will continue to show money accumulating until no more coins have been deposited. If timer is set to instant start, as soon as start price is reached, timer will change to time counting down.
- Both mode: As coins are deposited display shows money accumulating (\$.25, \$.50, \$.75 etc). If start price is not reached, after 5 seconds timer will alternate between “add \$x.xx more” and amount of money already deposited.

Display programming with push button:

- Unit can be programmed using buttons that are located inside display. One is labeled **S2**, which is used to change from item to item. One is labeled **S1** which is used to set desired value. If you hold down **S1** this will cause numbers to decrease. If you repeatedly push **S1** numbers will increase.
- When programming with buttons use same instructions as remote except for the following. Where it says to press **CH +** use **S2** and where it says to use **VOL +** or **-** use **S1**.

Operating Instructions:

- If the machine has multiple functions (ex 12000 has shampoo or fragrance), select desired function.
- Insert coins or bills to start desired function.
- If shampoo/spot is selected, it is recommended that you thoroughly vacuum before applying formula.
- To use shampoo function, toggle switch must be set to shampoo. The switch on the brush head is what selects the shampoo formula or the spot remover formula. To reduce amount of foam, set brush selector switch on handle to the middle (off) position to allow excess foam to be spread with brush.
- To use fragrance function, toggle switch must be set to fragrance and other toggle switch must be set to desired fragrance type. To spray fragrance, the button on the side of the fragrance gun must be held down. Do not spray fragrance material on decorative dash/console or door panel parts. It is recommended to spray under the seats.
- If other function is later selected after the original selected item, the unit will recalculate timer based on the amount of money it takes to start the specific function and reset accordingly.
- Once service is used, hang up hose(s).

Changing fluids:

Disconnect power. Unscrew cap from empty bottle. Remove empty bottle. Insert new bottle into unit or refill empty bottle. Insert are line into new/refilled bottle and screw cap on. Reconnect power and prime line if necessary.

Maintenance:

- **All servicing of machine should be conducted by an authorized service representative!**
- All fluid lines must be primed upon start-up of the machine and when changing fluids if necessary.
- To maintain performance, keep dispensing nozzles clean.
- Periodically inspect electrical wires and connections for wear or fatigue.
- Check inner cabinet fluid hoses and connections for cracks or wear on a weekly basis.
- Check shampoo and spot formula bottles regularly to assure they are full.
- Check external hoses, spray nozzle, and shampoo brush assembly for any signs of wear.
- Clean canister with a stainless steel cleaner as needed. Decals can be cleaned with mild soap and water.
- Each fluid line has a filter at the end of it which sits inside the fluid bottles; clean these filters as needed.



DISCONNECT POWER BEFORE SERVICING OR TROUBLESHOOTING!



Troubleshooting:

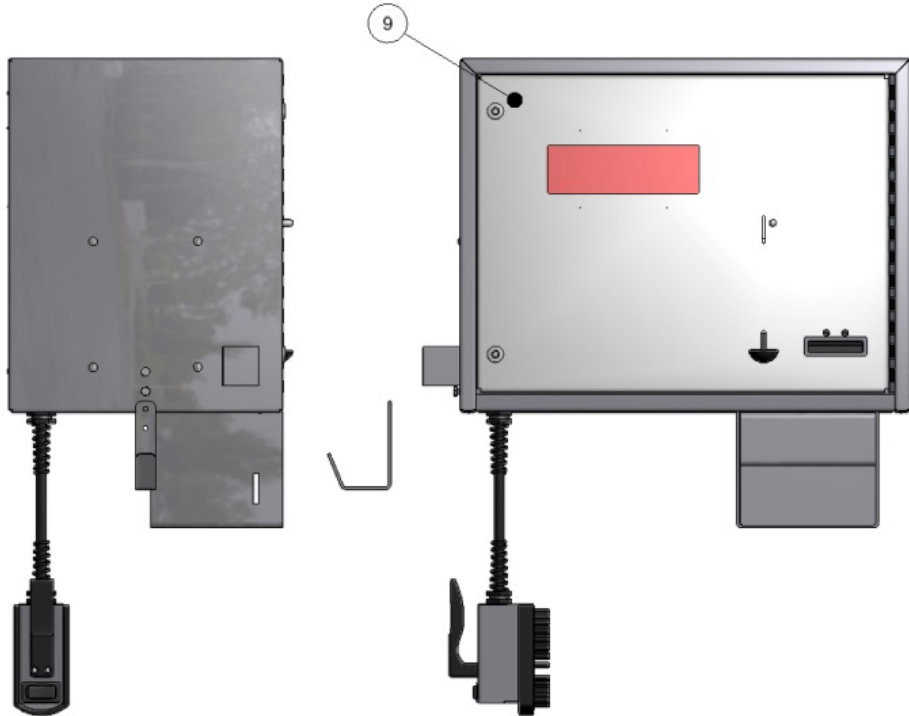
Problem	Possible cause	Solution
Unit is not powered.	Switch inside unit is not in the on position.	Flip switch on.
	No power to machine.	Check incoming power.
	10 Amp fuse on control panel is blown.	Replace fuse.
	Loose connection.	Check incoming power connection.
Display is not powering.	Open unit and check 24 volts coming out of transformer.	If no voltage, replace transformer.
Machine is behaving erratically.	Is the incoming power at 120V?	Check voltage and monitor while machine runs. Low voltage can cause erratic behavior.
	Are any of the machines wires worn through or connections not making contact?	Inspect wiring and connections. Look for sharp bends in wires and places where wire is against the metal chassis.

Display reads "closed" or "coin."	This indicates a continuous coin pulse coming to the timer or a shorted coin signal wire.	Disconnect coin signal wire at timer to see if problem goes away.
Display reads "error."	This indicated the program may be lost due to a bad battery or a power spike.	Reprogram timer, if problem comes back replace battery.
Display reads "aux."	This means continuous signal to auxiliary input.	
Display reads "fail."	Coin acceptor putting out continuous pulse.	Press mode button on display. If fail does not go away replace coin acceptor.
	Program in display may be lost.	Reprogram display. If fail goes away and then comes back, replace battery in display.
Fuse keeps blowing.	Compressor may be shorted out.	Un-wire compressor to see if problem goes away. If so, replace compressor.
Fluid will not draw through lines.	Is the pump coming on and turning?	Visually inspect pump, replace if necessary.
	Are line connections tight?	Fluids can dry out lines, clip ends and reattach, cable ties must be used for air-tight connection.
	Do lines need primed?	Cycle machine a visually watch from fluid coming out of bottles. Connections in lines must be tight!
	Are lines clogged?	Try using a bottle of hot water to draw through lines.

PART NO. 11000V

BILL OF MATERIALS			
ITEM	PART NUMBER	DESCRIPTION	QTY
39	1079-3	GASKET	74"
40	3100	1/4" CLEAR TUBING	60"
41	3105	3/16" OD TUBING	12"
45	8000-23	5 POLE FEMALE CONN	1
46	5901D5	WIRE NUT	5
47	5721D2	HEAT SHRINK TUBING	20"

BILL OF MATERIALS			
ITEM	PART NUMBER	DESCRIPTION	QTY
1	11000-1W	CABINET WELDMENT	1
2	11000-5A-1	CONTROL PLATE ASSEMBLY	1
3	5604D1	#10-24 x 1/2 CARR BOLT	2
4	5611D2	NUT, 10-24 UNC KEPP- ZINC	16
5	11000-4A	COMPRESSOR ASSEMBLY	1
6	11000-10w	BRACKET WELDMENT, SHAM. HOLDER	1
7	8678	HOSE HANGER	1
8	5601D8	1/4-20 x 3/8 HHCS-ZINC PLATED	4
9	11000-11A-1	DOOR ASSY,FRAGRANCE	1
10	8549-1	FLEX STRAIN RELIEF	1
11	11000-15	SHAMPOO BRUSH ASSEMBLY	1
12	8204RW	WELDMENT, COIN BOX	1
13	8638	PIN LOCK	1
15	11000-22	UNION 1/8 PUSH LOCK FITTING	1
16	8157	NUT, #6-32 KEPP NUT STAINLESS	5
17	11000-6w	BRACKET WELDMENT	2
18	5636D1	#10-24 PHIL. PAN HEAD SCREW	6
19	11000-53A	PUMP BRACKET ASSEMBLY	1
20	29000-59	VALIDATOR FACEPLATE HANDLE	1
21	29000-45W	VALIDATOR FACEPLATE WELDMENT	1
22	29000-44W	VALIDATOR BOX WELDMENT	1
23	5644D1	CAGE NUT 5/16-18	3
24	8958-1	MEDECO SCREW LOCK	1
25	8130-6	MEI MARS, 110V BILL VALIDATOR	1
26	5603D9	10 Std NF Nylock Nut	2
27	29000-42W	MOUNTING BRKT,WELDMENT	1
30	11000DBLUE	DECAL, 16000, BLUE	1
31	9500-47	STAINLESS TUBE WEIGHT	2
32	8843	DEBRIS FILTER	2
34	8802-1	BOTTLE CAP, DRILLED	2
35	8036	NUT, 1/4-20 UNC KEPS	8
36	9500WIN	WINTER SHAMPOO FORMULA	1
37	11000SPOT	SPOT REMOVER FORMULA	1
38	8687-3	HOLE PLUG 1-1/4"	1



REV	NO.	DESCRIPTION	DATE	BY
C	7337	ITEM 3 (5604D1) WAS 6 NOW 2	10/21/14	MWS
B	7153	REMOVED 5644D2 AND ADDED 5644D1	8-29-13	CK
A	5267	ADD 4 NUTS FOR VALIDATOR BRACKET	090109	JF

THIS DOCUMENT SHALL NOT BE REPRODUCED NOR SHALL THE INFORMATION THEREIN BE USED BY OR DISCLOSED TO OTHERS EXCEPT AS AUTHORIZED BY J.E. ADAMS INDUSTRIES

TITLE: SHAMPOO-SPOT MACHINE w/VAL

CEDAR RAPIDS, IOWA

J.E. ADAMS INDUSTRIES, LTD

DRAWN BY: JOHN F.

DATE: 6/16/2009

PART NO. 11000V

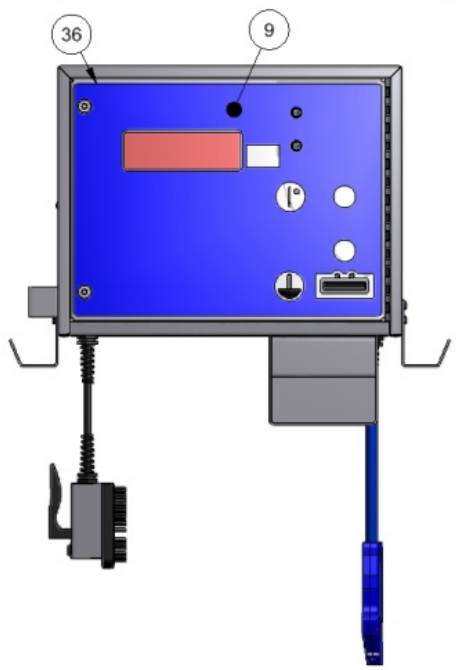
REV. C

UNSPECIFIED TOLERANCES:
 1 PL ±.030
 2 PL ±.010
 3 PL ±.003
 ANGLE ±1.0°

PART NO 12000V

BILL OF MATERIALS			
ITEM	PART NUMBER	DESCRIPTION	QTY
38	9500WIN	WINTER SHAMPOO FORMULA	1
39	11000SPOT	SPOT REMOVER FORMULA	1
40	11000-23	3/16" UNION PUSHLOCK	1
41	1079-3	GASKET	74"
42	8000-23	FEMALE 5 POLE CONN	1
46	5901D5	GRAY WIRE NUT	1
47	3100	1/4" RUBBER TUBING	150"
48	3105	3/16" OD PLASTIC TUBING	12"
49	8859	SCENT, NEW CAR	1
50	8865	SCENT, VANILLA	1
51	8857	SCENT, WILD CHERRY	1
52	5721D2	HEAT SHRIK TUBING	20"
54	8000-25	CONNECTOR, WIRE, WAGO	5
53	5901D4	ORANGE WIRE NUT	2

BILL OF MATERIALS			
ITEM	PART NUMBER	DESCRIPTION	QTY
1	11000-1W	CABINET WELDMENT	1
2	12000-5A-1	CONTROL PLATE ASSEMBLY	1
3	5604D1	#10-24 x 1/2 CARR BOLT	2
4	5611D2	NUT, 10-24 UNC KEPP- ZINC	16
5	11000-4A	COMPRESSOR ASSEMBLY	1
6	11000-10w	BRACKET WELDMENT, SHAM. HOLDER	1
7	8678	HOSE HANGER	2
8	5601D8	1/4-20 x 3/8 HHCS-ZINC PLATED	4
9	12000-11A-1	DOOR ASSEMBLY, SHAM-SPOT-FRAG	1
10	8549-1	FLEX STRAIN RELIEF	1
11	11000-15	SHAMPOO BRUSH ASSEMBLY	1
12	8204RW	WELDMENT, COIN BOX	1
13	8638	PIN LOCK	1
14	11000-22	UNION 1/8 PUSH LOCK FITTING	1
15	8157	NUT, #6-32 KEPP NUT STAINLESS	5
16	11000-6w	BRACKET WELDMENT	1
17	5636D1	#10-24 PHIL. PAN HEAD SCREW	6
18	12000-6A	BRACKET ASSEMBLY	1
19	8898-1	FRAGERANCE GUN ASSY. .750 OD HOSE	1
20	12000-53A	PUMP BRACKET ASSEMBLY	1
21	28000-40	PLASTIC CONTAINER	5
23	8802-1	BOTTLE CAP, DRILLED	5
24	9500-47	STAINLESS TUBE WEIGHT	5
25	8843	DEBRIS FILTER	5
28	29000-42W	MOUNTING BRKT,WELDMENT	1
29	5603D9	10 Std NF Nylock Nut	2
30	8130-6	MEI MARS, 110V BILL VALIDATOR	1
31	8958-1	MEDECO SCREW LOCK	1
32	5644D1	CAGE NUT 5/16-18	3
33	29000-44W	VALIDATOR BOX WELDMENT	1
34	29000-45W	VALIDATOR FACEPLATE WELDMENT	1
35	29000-59	VALIDATOR FACEPLATE HANDLE	1
36	12000DBLUE	DECAL, 12000, BLUE	1
37	8036	NUT, 1/4-20 UNC KEPS	8



D	7460	ITEM 46 WS 5, ADDED ITEMS 53 & 54	4/28/15	MWS
C	7337	ITEM 3 (5604D1) WAS 6, NOW 2	10/21/14	MWS
B	7153	REMOVED 5644D2 AND ADDED 5644D1	8-29-13	CK
A	5269	ADD 4 NUTS FOR VALIDATOR BRACKET	090109	JF
REV	NO.	DESCRIPTION	DATE	BY

TITLE: SHAMPOO-SPOT MACHINE

UNSPECIFIED TOLERANCES: 1 PL ±.030, 2 PL ±.020, 3 PL ±.003, ANGLE ±1°

SCALE: 1/2

SHEET: 1/2

DATE: 6/16/2009

DRAWN BY: JOHN

DATE: 6/16/2009

J.E. ADAMS INDUSTRIES, LTD.

PART NO: 12000V

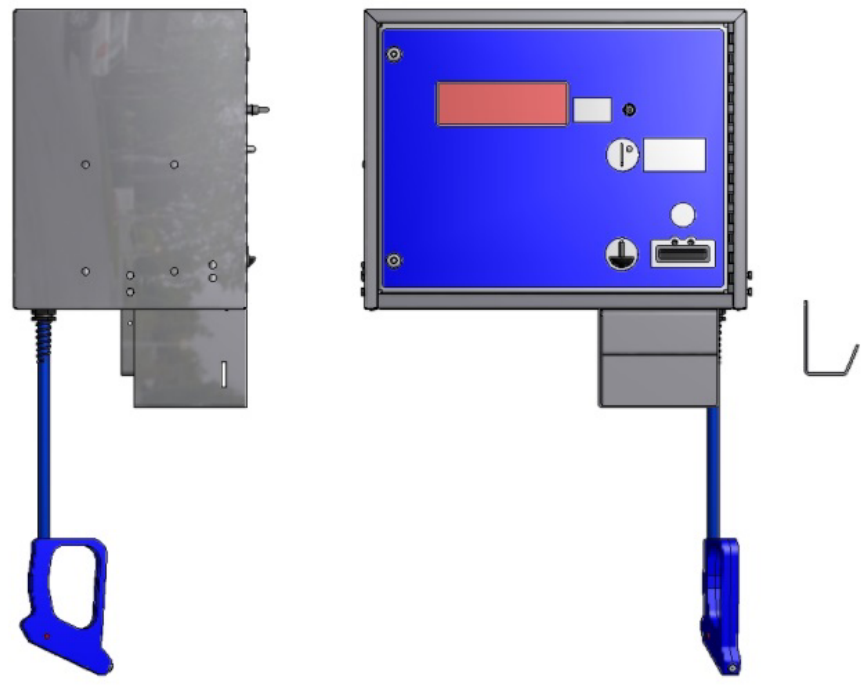
REV: D

THIS DOCUMENT SHALL NOT BE REPRODUCED NOR SHALL THE INFORMATION THEREIN BE USED BY OR DISCLOSED TO OTHERS EXCEPT AS AUTHORIZED BY J.E. ADAMS INDUSTRIES


PART NO. 13000V

BILL OF MATERIALS			
ITEM	PART NUMBER	DESCRIPTION	QTY
38	29000-44W	VALIDATOR BOX WELDMENT	1
39	5644D1	CAGE NUT 5/16-18	3
40	8958-1	MEDECO SCREW LOCK	1
41	8130-6	MEI MARS, 110V BILL VALIDATOR	1
42	5603D9	10 Std NF Nylock Nut	2
43	8157	NUT, #6-32 KEPP NUT STAINLESS	4
45	29000-42W	MOUNTING BRKT,WELDMENT	1
47	8036	NUT, 1/4-20 UNC KEPS	8
48	5721D2	HEAT SHRINK TUBING	20"

BILL OF MATERIALS			
ITEM	PART NUMBER	DESCRIPTION	QTY
1	11000-1W	CABINET WELDMENT	1
2	13000-5A-1	CONTROL PLATE ASSEMBLY	1
3	5604D1	#10-24 x 1/2 CARR BOLT	2
4	5611D2	NUT, 10-24 UNC KEPP- ZINC	16
5	11000-4A	COMPRESSOR ASSEMBLY	1
7	8678	HOSE HANGER	1
8	5601D8	1/4-20 x 3/8 HHCS-ZINC PLATED	4
9	13000-11A-1	DOOR ASSY,FRAGRANCE w/VAL	1
12	8204RW	WELDMENT, COIN BOX	1
13	8638	PIN LOCK	1
16	11000-6w	BRACKET WELDMENT	2
17	5636D1	#10-24 PHIL. PAN HEAD SCREW	6
19	8898-1	FRAGRANCE GUN ASSY. .750 OD HOSE	1
20	13000-53A	PUMP BRACKET ASSEMBLY	1
21	13000DBLUE	DECAL, 13000, BLUE	1
28	28000-40	PLASTIC CONTAINER	3
32	8802-1	BOTTLE CAP, DRILLED	3
33	9500-47	STAINLESS TUBE WEIGHT	3
34	8843	DEBRIS FILTER	3
36	3100	1/4" RUBBER TUBING	90"
49	3105	3/16" TUBING	12"
37	5901D5	ORANGE WIRE CONNECTOR	2
38	8000-23	FEMALE 5 POLE CONN	1
39	1079-3	GASKET	74"
40	8859	SCENT, NEW CAR	1
41	8865	SCENT, VANILLA	1
42	8857	SCENT, WILD CHERRY	1
43	9500-56	WIRING HARNESS, VALIDATOR	1
36	29000-59	VALIDATOR FACEPLATE HANDLE	1
37	29000-45W	VALIDATOR FACEPLATE WELDMENT	1



REV	NO.	DESCRIPTION	DATE	BY
C	7337	ITEM 3 WAS 6 NOW 2	10/21/14	MWS
B	7153	REMOVED 5644D2 AND ADDED 5644D1	8-29-13	CK
A	5271	ADD 4 NUTS FOR VALIDATOR BRACKET	090109	JF

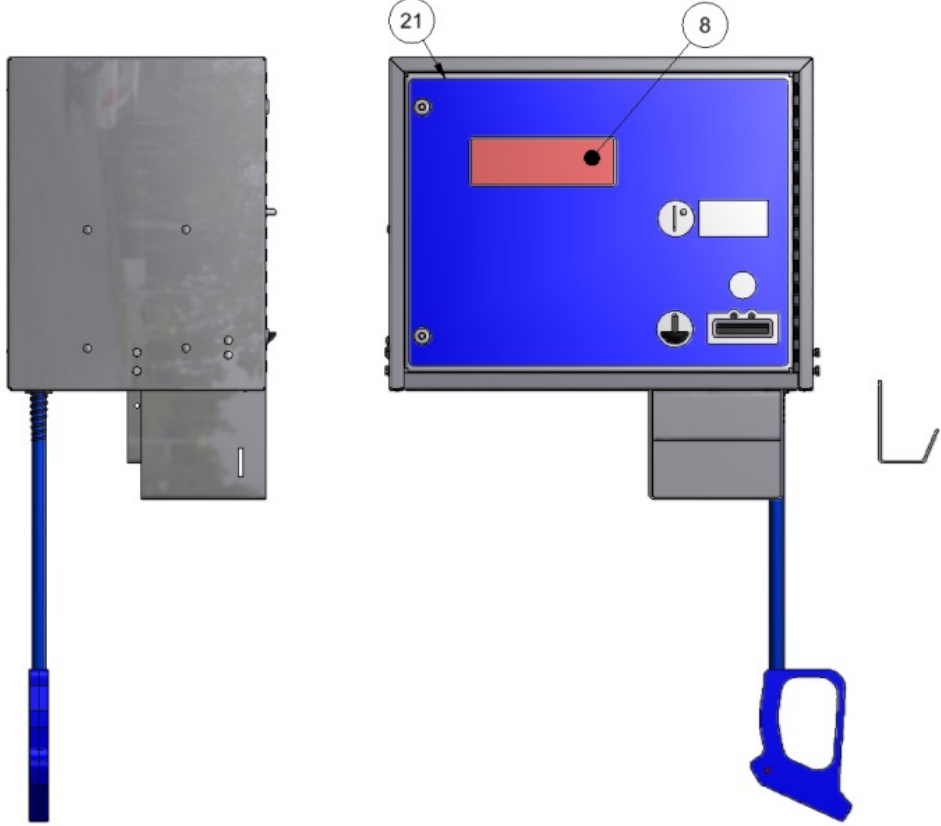
TITLE		FRAGRANCE MACHINE	
UNSPECIFIED TOLERANCES	MATERIAL	 CEDAR RAPIDS, IOWA	
	SCALE		
	DRAWN BY		
DATE	5/1/2009	PART NO.	13000V
1 PL ±.030 2 PL ±.010 3 PL ±.003 ANGLE ±1.0°		REV.	C

THIS DOCUMENT SHALL NOT BE REPRODUCED NOR SHALL THE INFORMATION THEREIN BE USED BY OR DISCLOSED TO OTHERS EXCEPT AS AUTHORIZED BY J.E. ADAMS INDUSTRIES

PART NO. 16000V

BILL OF MATERIALS			
ITEM	PART NUMBER	DESCRIPTION	QTY
33	8130-6	MEI MARS, 110V BILL VALIDATOR	1
34	5603D9	10 Std NF Nylock Nut	2
35	8157	NUT, #6-32 KEPP NUT STAINLESS	4
36	29000-42W	MOUNTING BRKT,WELDMNT	1
38	8036	NUT, 1/4-20 UNC KEPS	8
40	5721D2	HEAT SHRINK TUBING	20"

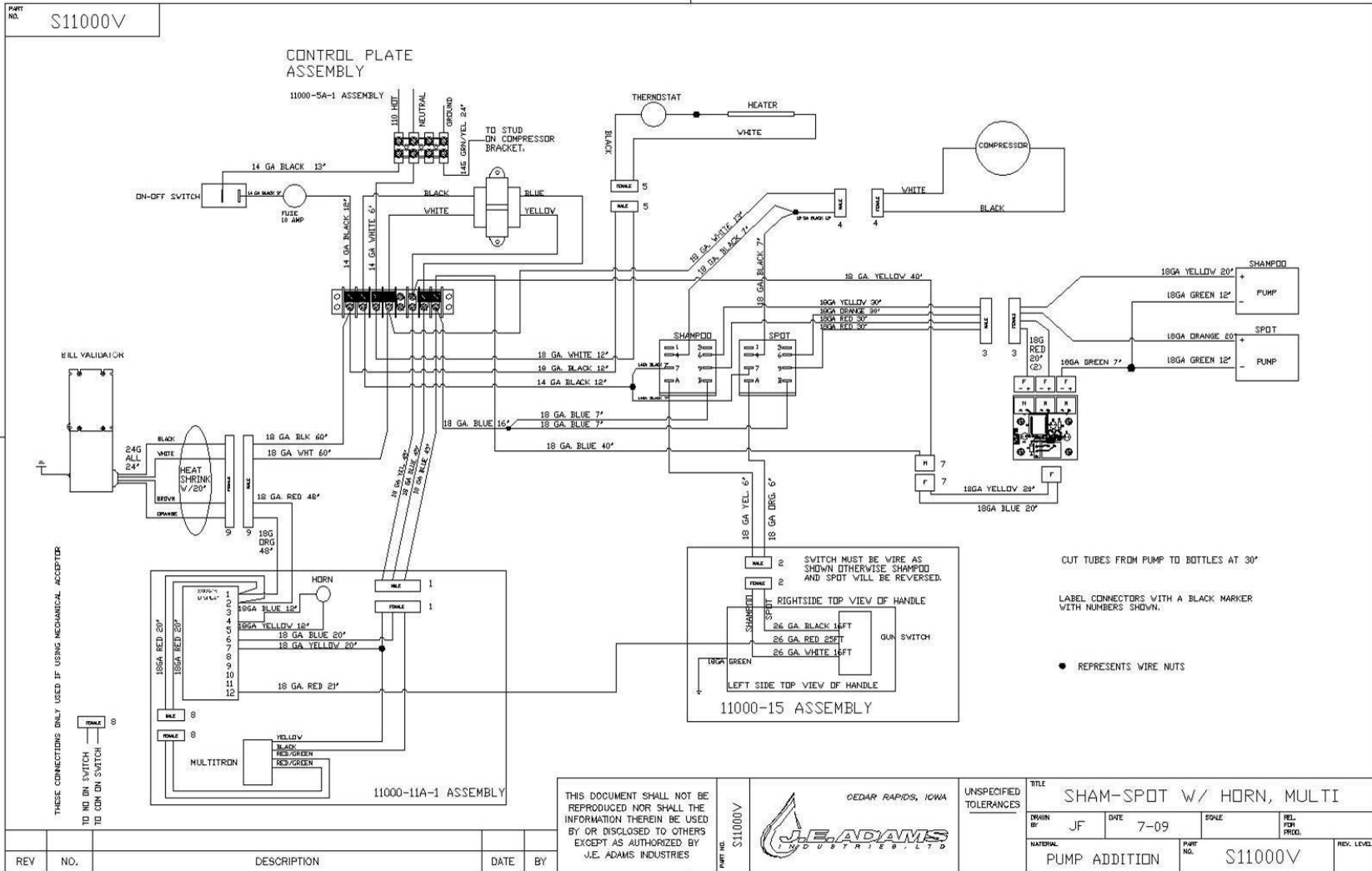
BILL OF MATERIALS			
ITEM	PART NUMBER	DESCRIPTION	QTY
1	11000-1W	CABINET WELDMNT	1
2	13000-5A-1	CONTROL PLATE ASSEMBLY	1
3	5604D1	#10-24 x 1/2 CARR BOLT	2
4	5611D2	NUT, 10-24 UNC KEPP- ZINC	16
5	11000-4A	COMPRESSOR ASSEMBLY	1
6	8678	HOSE HANGER	1
7	5601D8	1/4-20 x 3/8 HHCS-ZINC PLATED	4
8	11000-11A-1	DOOR ASSY,FRAGRANCE	1
9	8204RW	WELDMNT, COIN BOX	1
10	8638	PIN LOCK	1
11	11000-6w	BRACKET WELDMNT	2
12	5636D1	#10-24 PHIL. PAN HEAD SCREW	6
19	16000-53A	PUMP BRACKET ASSEMBLY	1
21	16000DBLUE	DECAL, 16000, BLUE	1
22	8898-2	GUN ASSEMBLY	1
23	8802-1	BOTTLE CAP, DRILLED	1
25	9500-47	STAINLESS TUBE WEIGHT	1
26	8843	DEBRIS FILTER	1
27	3100	1/4" RUBBER TUBING	30"
39	3105	3/16" TUBING	12"
28	5901D5	ORANGE WIRE CONNECTOR	1
29	8000-23	FEMALE 5 POLE CONN	1
30	1079-3	GASKET	74"
31	29035-10	TIRE SHINE FORMULA, 1 GAL	1
32	9500-56	WIRING HARNESS, VALIDATOR	1
28	29000-59	VALIDATOR FACEPLATE HANDLE	1
29	29000-45W	VALIDATOR FACEPLATE WELDMNT	1
30	29000-44W	VALIDATOR BOX WELDMNT	1
31	5644D1	CAGE NUT 5/16-18	3
32	8958-1	MEDECO SCREW LOCK	1

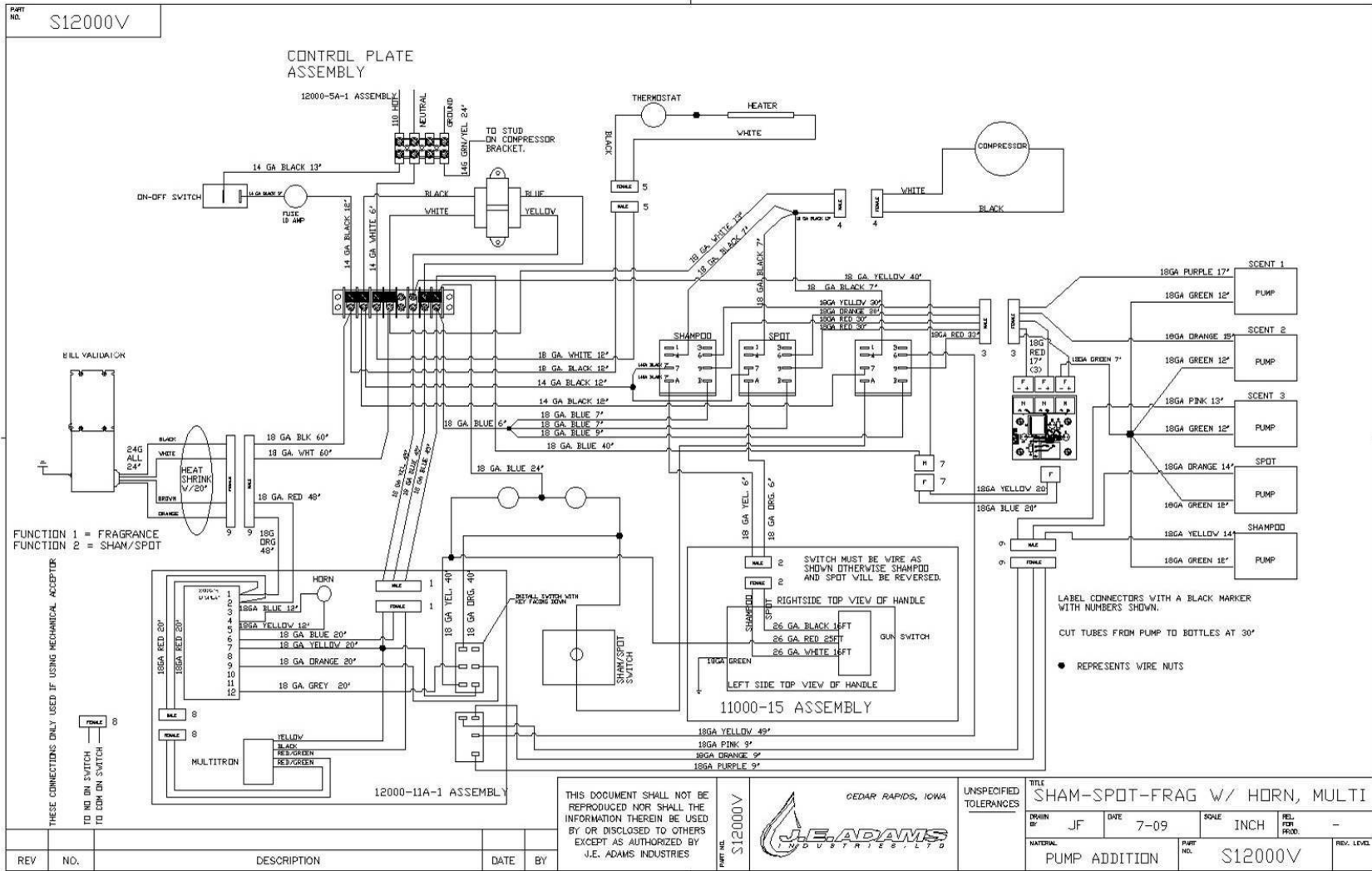


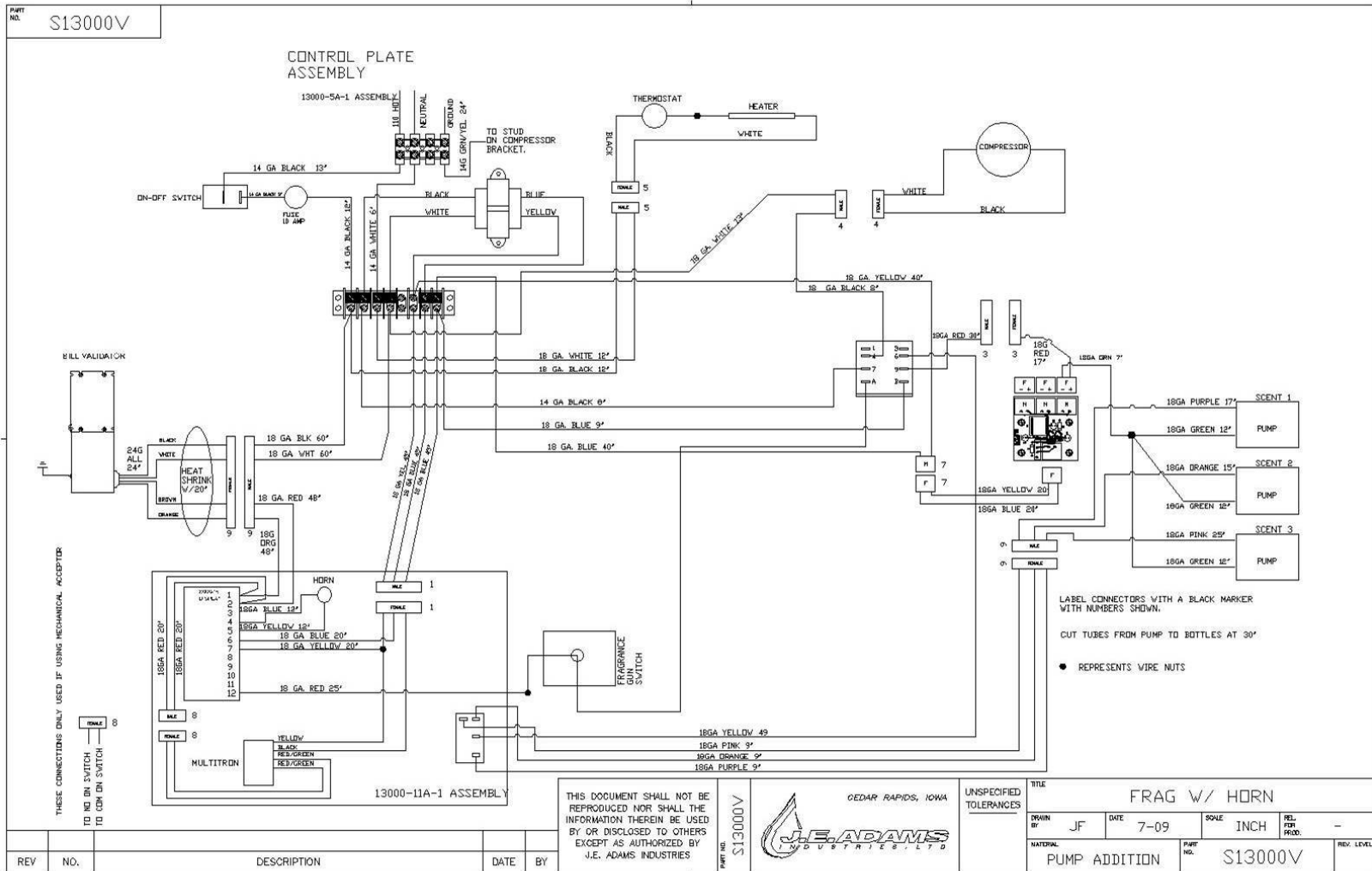
REV	NO.	DESCRIPTION	DATE	BY
C	7337	ITEM 3 WAS 6 NOW 2	10/21/14	MWS
B	7153	REMOVED 5644D2 AND ADDED 5644D1	8-29-13	CK
A	5273	ADD 4 NUTS FOR VALIDATOR BRACKET	090109	JF

TITLE		TIRE SHINE MACHINE	
UNSPECIFIED TOLERANCES	MATERIAL		
1 PL ±.030	SCALE		
2 PL ±.010	DRAWN BY JOHN F.		
3 PL ±.003	DATE 5/4/2009	PART NO. 16000V	REV. C
ANGLE ±1.0°			

THIS DOCUMENT SHALL NOT BE REPRODUCED NOR SHALL THE INFORMATION THEREIN BE USED BY OR DISCLOSED TO OTHERS EXCEPT AS AUTHORIZED BY J.E. ADAMS INDUSTRIES







THIS DOCUMENT SHALL NOT BE REPRODUCED NOR SHALL THE INFORMATION THEREIN BE USED BY OR DISCLOSED TO OTHERS EXCEPT AS AUTHORIZED BY J.E. ADAMS INDUSTRIES

UNSPECIFIED TOLERANCES

DATE 7-09

SOLE INCH

REL PER FRID. -

NATERIAL PUMP ADDITION

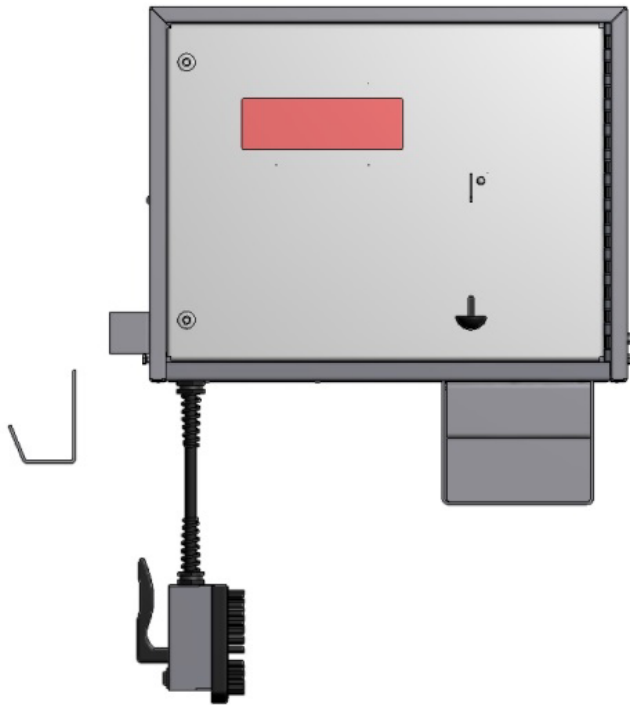
PART NO. S13000V

REV LEVEL

REV	NO.	DESCRIPTION	DATE	BY

TITLE				
FRAG W/ HORN				
DESIGN BY	JF	DATE	7-09	SOLE
PUMP ADDITION			INCH	REL PER FRID. -
NATERIAL			PART NO.	REV LEVEL
S13000V			S13000V	

PART NO. 11000-220V



BILL OF MATERIALS			
ITEM	PART NUMBER	DESCRIPTION	QTY
1	1079-3	DOOR GASKET	74"
2	11000-10w	BRACKET WELDMENT, SHAM. HOLDER	1
3	11000-11A	DOOR ASSEMBLY, SHAM-SPOT	1
4	11000-15	SHAMPOO BRUSH ASSEMBLY	1
5	11000-1W	CABINET WELDMENT	1
6	11000-22	UNION 1/8 PUSH LOCK FITTING	1
7	11000-4A1-220V	220V GAST DOA COMPRESSOR ASSEMBLY	1
8	11000-53A	PUMP BRACKET ASSEMBLY	1
9	11000-5A-220V	CONTROL PLATE ASSEMBLY, 220V	1
10	11000-6w	BRACKET WELDMENT	2
11	11000DBLACK	BLACK DECAL SET	1
12	11000SPOT	SPOT REMOVER FORMULA	1
13	3100	1/4" CLEAR TUBING	48"
14	3105	3/16" OD PLASTIC TUBING	12"
15	5601D8	1/4-20 x 3/8 HHCS-ZINC PLATED	4
16	5604D1	#10-24 x 1/2 CARR BOLT	6
17	5611D2	NUT, 10-24 UNC KEPP-ZINC	16
18	5636D1	#10-24 PHIL. PAN HEAD SCREW	4
19	5644D1	CAGE NUT 5/16-18	2
20	5901D5	WIRE NUT	5
21	5943B3223	18GA ORANGE WIRE	15"
22	5943B3224	18GA YELLOW WIRE	15"
23	5943B3229	18GA WHITE WIRE	30"
24	8000-23	5 POLE FEMALE CONNECTOR	1
25	8081	CABLE TIE MOUNT	12
26	8084	CABLE TIE	38
27	8157	NUT, #6-32 KEPP NUT STAINLESS	1
28	8204RW	WELDMENT, COIN BOX	1
29	8549-1	FLEX STRAIN RELIEF	1
30	8638	PIN LOCK	1
31	8678	HOSE HANGER	1
32	8687-3	PLUG, FINISHING	1
33	8802-1	DRILLED CAP	2
34	8843	FILTER	2
35	9500WIN	WINTER SHAMPOO FORMULA	1

E

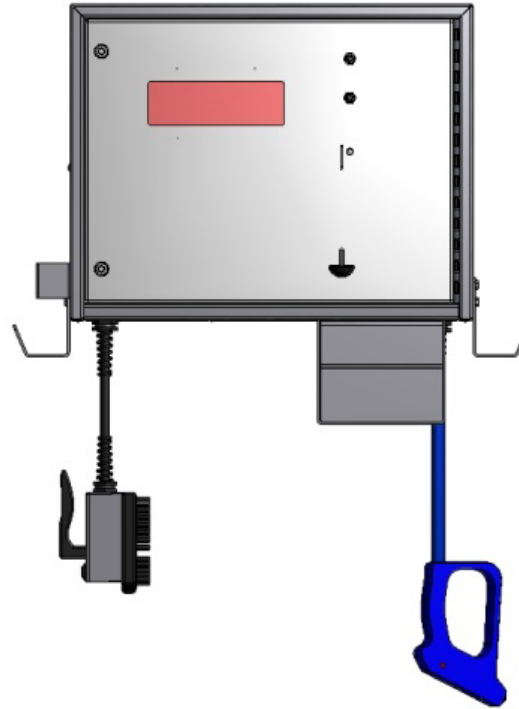
REV	NO.	DESCRIPTION	DATE	BY	TITLE	MATERIAL	SCALE	DRAWN BY	DATE	PART NO.	REV.
E	7337	ITEM 16 (5604D1) WAS 10 NOW 6	10/21/14	MWS	SHAMPOO-SPOT MACHINE						
D	7153	REMOVED 5644D2 AND ADDED 5644D1	8-29-13	CK	UNSPECIFIED TOLERANCES						
C	6137	REMOVED 11000-4A-220V AND ADDED 11000-4A1-220V	11-16-10	CK	1 PL ±.030						
					2 PL ±.010			CHAD K.			
					3 PL ±.003						
					ANGLE ±1.0°				3/3/2010	11000-220V	E

THIS DOCUMENT SHALL NOT BE REPRODUCED NOR SHALL THE INFORMATION THEREIN BE USED BY OR DISCLOSED TO OTHERS EXCEPT AS AUTHORIZED BY J.E. ADAMS INDUSTRIES



12000-220V

ITEM	PART NUMBER	DESCRIPTION	QTY	ITEM	PART NUMBER	DESCRIPTION	QTY
46	12000-53A	PUMP BRACKET ASSEMBLY	1	1	11000-10w	BRACKET WELDMENT, SHAM. HOLDER	1
48	5644D1	CAGE NUT 5/16-18	2	2	11000-15	SHAMPOO BRUSH ASSEMBLY	1
49	28000-40	PLASTIC CONTAINER	5	3	11000-1W	CABINET WELDMENT	1
50	8802-1	BOTTLE CAP, DRILLED	5	4	11000-22	UNION 1/8 PUSH LOCK FITTING	1
52	8000-25	CONNECTOR, WIRE, WAGO	5	5	11000-4A1-220V	220V GAST DOA COMPRESSOR ASSEMBLY	1
51	5901D4	ORANGE WIRE CONNECTOR	2	6	11000-6w	BRACKET WELDMENT	1
				7	12000-11A	DOOR ASSEMBLY, SHAM-SPOT-FRAG	1
				8	12000-5A-220V	CONTROL PLATE ASSEMBLY	1
				9	12000-6A	BRACKET ASSEMBLY	1
				10	3100	1/4 RUBBER TUBING	102"
				11	3105	1/8 PLASTIC TUBING	12"
				12	5601D8	1/4-20 x 3/8 HHCS-ZINC PLATED	4
				13	5604D1	#10-24 x 1/2 CARR BOLT	6
				14	5611D2	NUT, 10-24 UNC KEPP- ZINC	16
				15	5636D1	#10-24 PHIL. PAN HEAD SCREW	4
				20	5901D5	GRAY WIRE CONNECTOR	1
				21	5943B3223	18 GA ORANGE WIRE	15"
				22	5943B3224	18 GA YELLOW WIRE	15"
				23	5943B3229	18 GA WHITE WIRE	30"
				25	8000-23	FEMALE 5 POLE CONNECTOR	1
				26	8157	NUT, #6-32 KEPP NUT STAINLESS	1
				27	8204RW	WELDMENT, COIN BOX	1
				29	8549-1	FLEX STRAIN RELIEF	1
				30	8638	PIN LOCK	1
				31	8678	HOSE HANGER	2
				32	8802-1	DRILLED LOCKING CAP	5
				34	8843	FILTER	5
				35	8898-1	FRAGRANCE GUN ASSY. .750 OD HOSE	1
				38	1079-3	GASKET	74"
				39	11000-23	3/16 UNION PUSH LOCK	1
				40	12000DBLACK	DECAL SET, BLACK	1
				41	11000SPOT	SPOT REMOVER FORMULA	1
				42	9500WIN	SHAMPOO FORMULA	1
				43	8859	SCENT, NEW CAR	1
				44	8865	SCENT, VANILLA	1
				45	8857	SCENT, WILD CHERRY	1



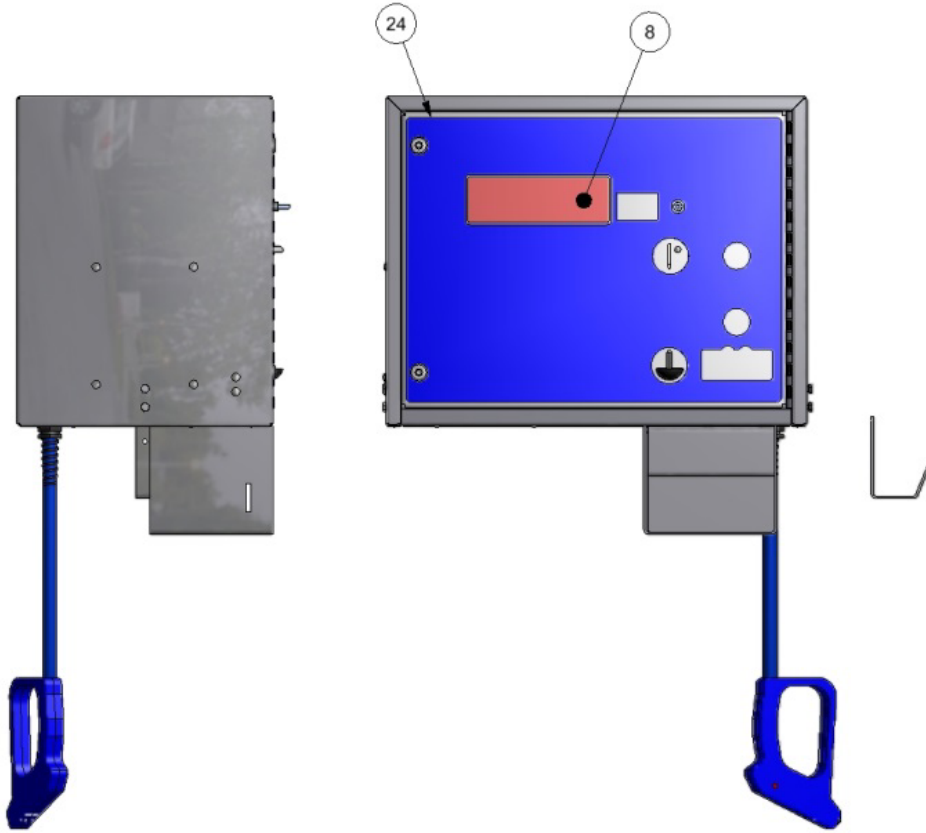
REV	NO.	DESCRIPTION	DATE	BY
F	7460	ADDED 28000-40, 8802-1, 8000-25 & 5901D4, ITEM 20 WAS 7	4/28/15	MWS
E	7337	12000 MODEL REFERENCED IN ERROR, ITEM 13 SHOULD HAVE BEEN 10, NOW 6, REVS SKIPPED DUE TO MODEL REF. ERROR	10/21/14	MWS
B	7153	REMOVED 5644D2 AND ADDED 5644D1	8-29-13	CK
A	6138	REMOVED 11000-4A-220V AND ADDED 11000-4A1-220V	11-17-10	CK

THIS DOCUMENT SHALL NOT BE REPRODUCED NOR SHALL THE INFORMATION THEREIN BE USED BY OR DISCLOSED TO OTHERS EXCEPT AS AUTHORIZED BY J.E. ADAMS INDUSTRIES


TITLE			
220V SHAMPOO-SCENT MACHINE			
UNSPECIFIED TOLERANCES	MATERIAL	CEDAR RAPIDS, IOWA	
1 PL ±.030	SCALE	INCH	
2 PL ±.010	DRAWN BY	CHAD KUNCE	
3 PL ±.003	DATE	2/10/2003	
ANGLE ±1.0°	PART NO.	12000-220V	
	REV.	F	

PART NO. 13000-220V

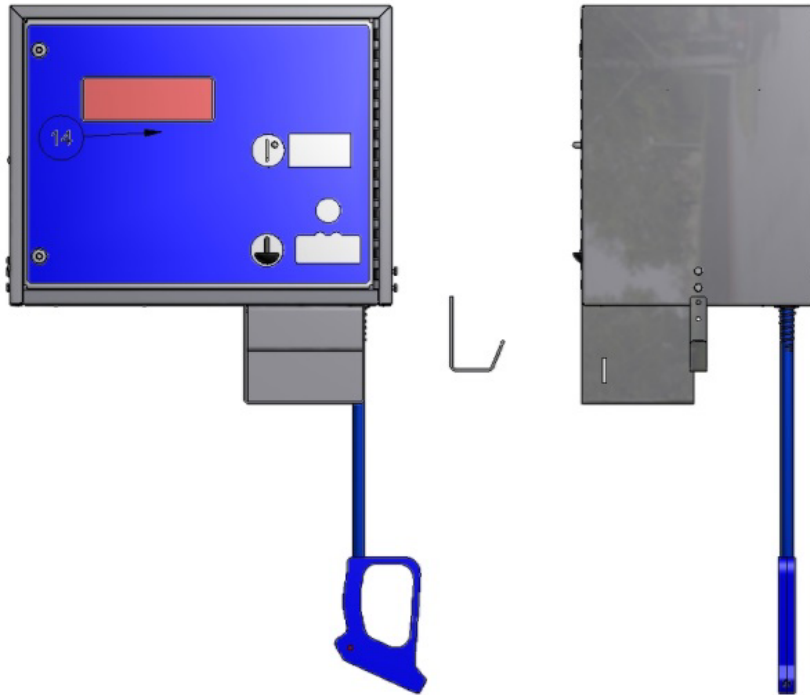
NOTE:
1) USE WIRE DIAGRAM S13000-220V.



BILL OF MATERIALS			
ITEM	PART NUMBER	DESCRIPTION	QTY
1	11000-1W	CABINET WELDMENT	1
2	13000-5A-220V	CONTROL PLATE ASSEMBLY	1
3	5604D1	#10-24 x 1/2 CARR BOLT	6
4	5611D2	NUT, 10-24 UNC KEPP- ZINC	16
5	11000-4A1-220V	220V GAST DOA COMPRESSOR ASSEMBLY	1
6	8678	HOSE HANGER	1
7	5601D8	1/4-20 x 3/8 HHCS-ZINC PLATED	4
8	13000-11A	DOOR ASSY,FRAGRANCE	1
9	8204RW	WELDMENT, COIN BOX	1
10	8638	PIN LOCK	1
11	11000-6w	BRACKET WELDMENT	2
12	5636D1	#10-24 PHIL. PAN HEAD SCREW	4
13	8898-1	FRAGERANCE GUN ASSY. .750 OD HOSE	1
14	13000-53A	PUMP BRACKET ASSEMBLY	1
15	3100	1/4" RUBBER TUBING	62"
16	5901D5	ORANGE WIRE CONNECTOR	2
20	8000-23	FEMALE 5 POLE CONNECTOR	1
21	8802-1	DRILLED LOCKING CAP	3
22	8843	FILTER	3
23	1079-3	GASKET	74"
24	13000DBLACK	DECAL SET, BLACK	1
25	8859	SCENT, NEW CAR	1
26	8865	SCENT, VANILLA	1
27	8857	SCENT, WILD CHERRY	1
28	5644D1	CAGE NUT 5/16-18	2

C	7337	DRAWING WAS REFERNCING WRONG MODEL, CORRECTED ITEM 3 SHOULD HAVE BEEN 10 NOW 6	10/21/14	MWS	TITLE FRAGRANCE MACHINE				
B	7153	REMOVED 5644D2 AND ADDED 5644D1	8-29-13	CK	UNSPECIFIED TOLERANCES	MATERIAL	CEDAR RAPIDS, IOWA		
A	6139	REMOVED 11000-4A-220V AND ADDED 11000-4A1-220V	11-17-10	CK	1 PL ±.030	SCALE			
REV	NO.	DESCRIPTION	DATE	BY	2 PL ±.010	DRAWN BY CHAD K.			
THIS DOCUMENT SHALL NOT BE REPRODUCED NOR SHALL THE INFORMATION THEREIN BE USED BY OR DISCLOSED TO OTHERS EXCEPT AS AUTHORIZED BY J.E. ADAMS INDUSTRIES					3 PL ±.003	DATE 10/08/09			
					ANGLE ±1.0°				

PART NO. 16000-220V



BILL OF MATERIALS			
ITEM	PART NUMBER	DESCRIPTION	QTY
1	1079-3	DOOR GASKET	74"
2	11000-11A	DOOR ASSEMBLY, SHAM-SPOT	1
3	11000-1W	CABINET WELDMENT	1
5	11000-6w	BRACKET WELDMENT	2
6	13000-5A-220V	CONTROL PLATE ASSEMBLY	1
7	16000-53A	PUMP BRACKET ASSEMBLY	1
8	16000DBLUE	DECAL, 16000, BLUE	1
9	29035-10	TIRE SHINE FORMULA, 1 GALLON	1
10	3100	1/4" RUBBER TUBING	25"
11	5601D8	1/4-20 x 3/8 HHCS-ZINC PLATED	4
12	5604D1	#10-24 x 1/2 CARR BOLT	6
13	5611D2	NUT, 10-24 UNC KEPP- ZINC	16
14	5636D1	#10-24 PHIL. PAN HEAD SCREW	4
15	5644D1	CAGE NUT 5/16-18	2
16	5901D5	ORANGE WIRE NUT	1
17	8000-23	5 POLE FEMALE CONNECTOR	1
18	8204RW	WELDMENT, COIN BOX	1
19	8638	PIN LOCK	1
20	8678	HOSE HANGER	1
21	8802-1	DRILLED LOCKING CAP	1
22	8843	FILTER	1
23	8898-2	GUN ASSEMBLY	1
24	9500-47	TUBING WEIGHT	1
23	11000-4A1-220V	220V GAST DOA COMPRESSOR ASSEMBLY	1

TITLE TIRE SHINE MACHINE, 220V @ 50HZ

C	7337	ITEM 12 WAS 10 NOW 6	10/21/14	MWS
REV	NO.	DESCRIPTION	DATE	BY

UNSPECIFIED TOLERANCES	MATERIAL
1 PL ±.030	SCALE
2 PL ±.010	DRAWN BY CHAD K.
3 PL ±.003	DATE 3/4/2010
ANGLE ±1.0°	

CEDAR RAPIDS, IOWA

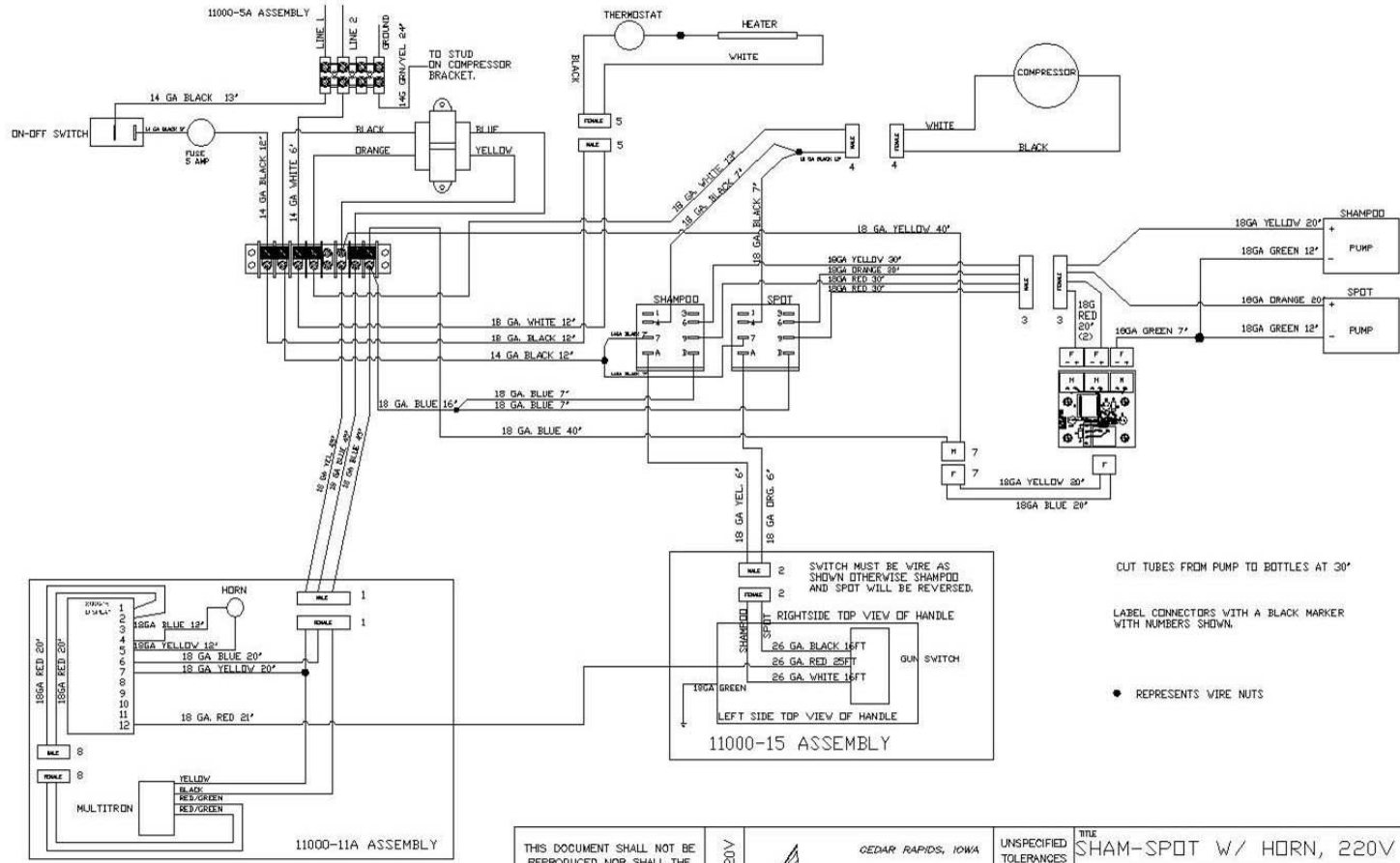


PART NO. 16000-220V REV. C

THIS DOCUMENT SHALL NOT BE REPRODUCED NOR SHALL THE INFORMATION THEREIN BE USED BY OR DISCLOSED TO OTHERS EXCEPT AS AUTHORIZED BY J.E. ADAMS INDUSTRIES

PART NO. S11000-220V

CONTROL PLATE ASSEMBLY



THESE CONNECTIONS ONLY USED IF USING MECHANICAL ACCEPTOR TO NO IN SWITCH TO COM ON SWITCH

CUT TUBES FROM PUMP TO BOTTLES AT 30"
 LABEL CONNECTORS WITH A BLACK MARKER WITH NUMBERS SHOWN.
 ● REPRESENTS WIRE NUTS

THIS DOCUMENT SHALL NOT BE REPRODUCED NOR SHALL THE INFORMATION THEREIN BE USED BY OR DISCLOSED TO OTHERS EXCEPT AS AUTHORIZED BY J.E. ADAMS INDUSTRIES

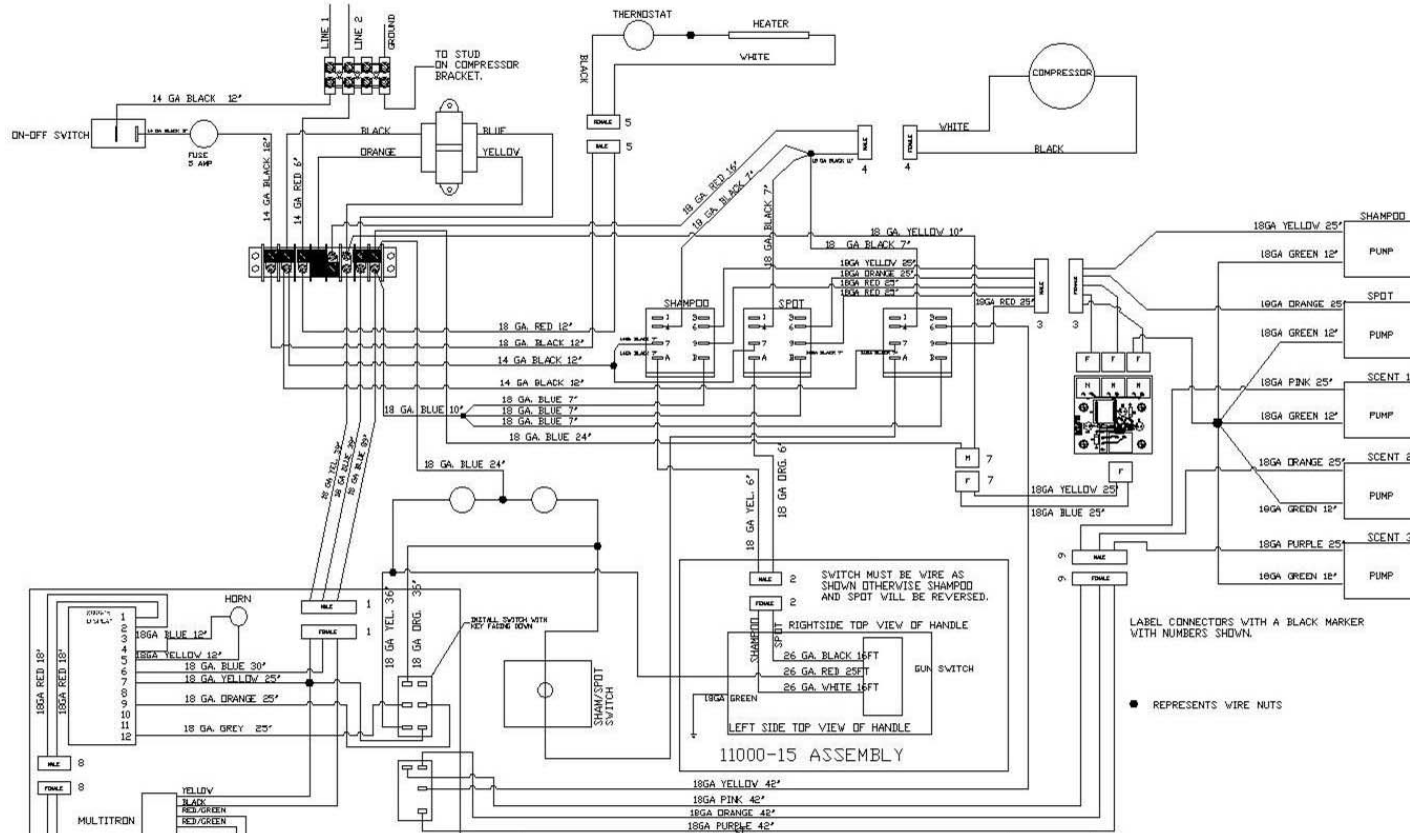


UNSPECIFIED TOLERANCES		TITLE SHAM-SPOT W/ HORN, 220V @ 50HZ	
DESIGN BY CK	DATE 3-10	SCALE	REL. PER. PROD.
PART NO. S11000-220V		PART NO. S11000-220V	
REV. NO.		REV. LEVEL	

REV	NO.	DESCRIPTION	DATE	BY

S12000-220V-A

CONTROL PLATE ASSEMBLY



THESE CONNECTIONS ONLY USE IF USING MECHANICAL ACCEPTOR TO NO ON SWITCH TO COM ON SWITCH

THIS DOCUMENT SHALL NOT BE REPRODUCED NOR SHALL THE INFORMATION THEREIN BE USED BY OR DISCLOSED TO OTHERS EXCEPT AS AUTHORIZED BY J.E. ADAMS INDUSTRIES

PART NO. S12000-220V

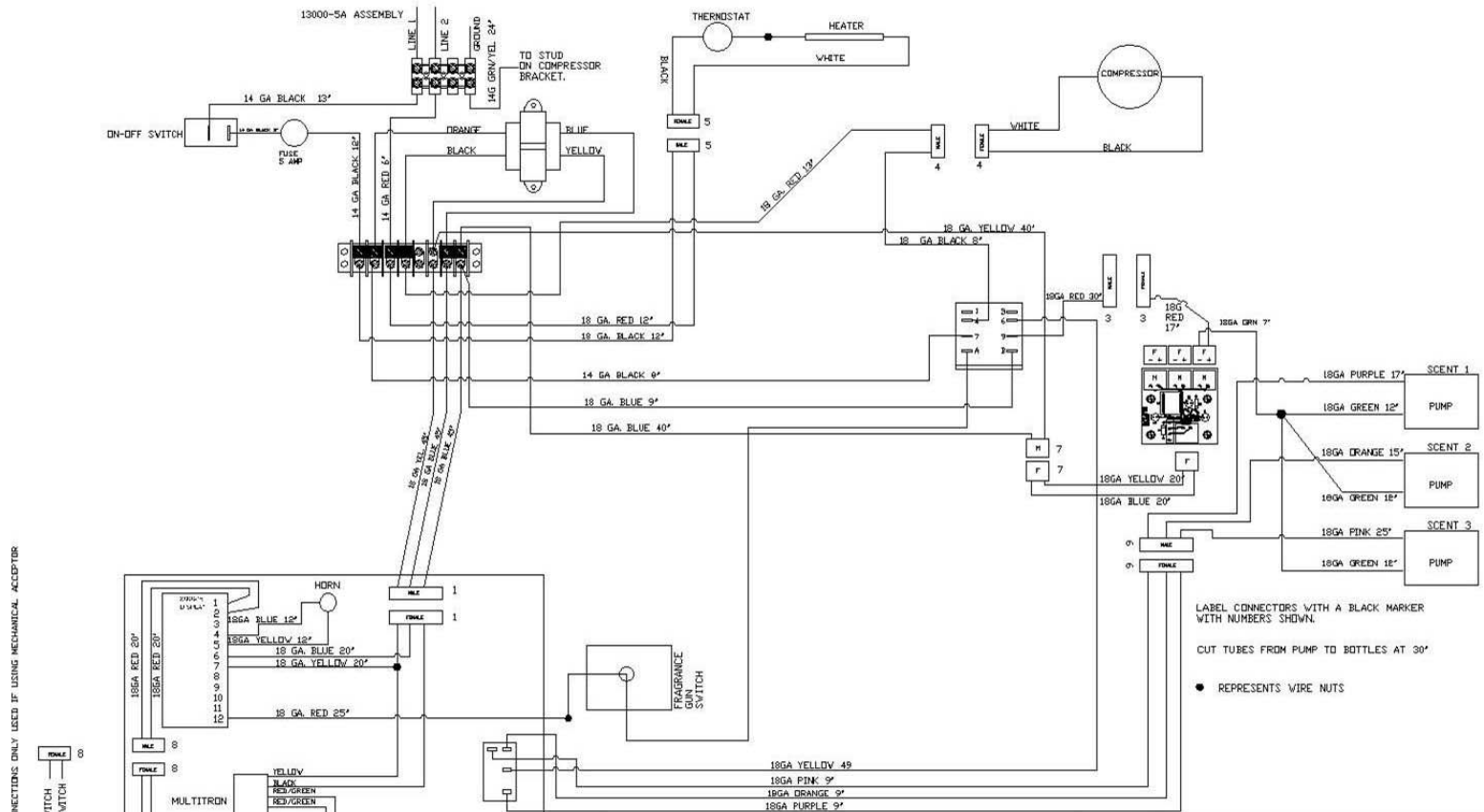


UNSPECIFIED TOLERANCES

TITLE		220V SHAMPOO-FRAGRANCE	
DESIGN BY	CK	DWG 4-07	SCALE
MATERIAL		PART NO. S12000-220V-A	REV. LEVEL

PART NO. S13000-220V

CONTROL PLATE ASSEMBLY



THESE CONNECTIONS ONLY USED IF USING MECHANICAL ACCEPTER TO NO ON SWITCH TO ON ON SWITCH

THIS DOCUMENT SHALL NOT BE REPRODUCED NOR SHALL THE INFORMATION THEREIN BE USED BY OR DISCLOSED TO OTHERS EXCEPT AS AUTHORIZED BY J.E. ADAMS INDUSTRIES

PART NO. S13000-220V



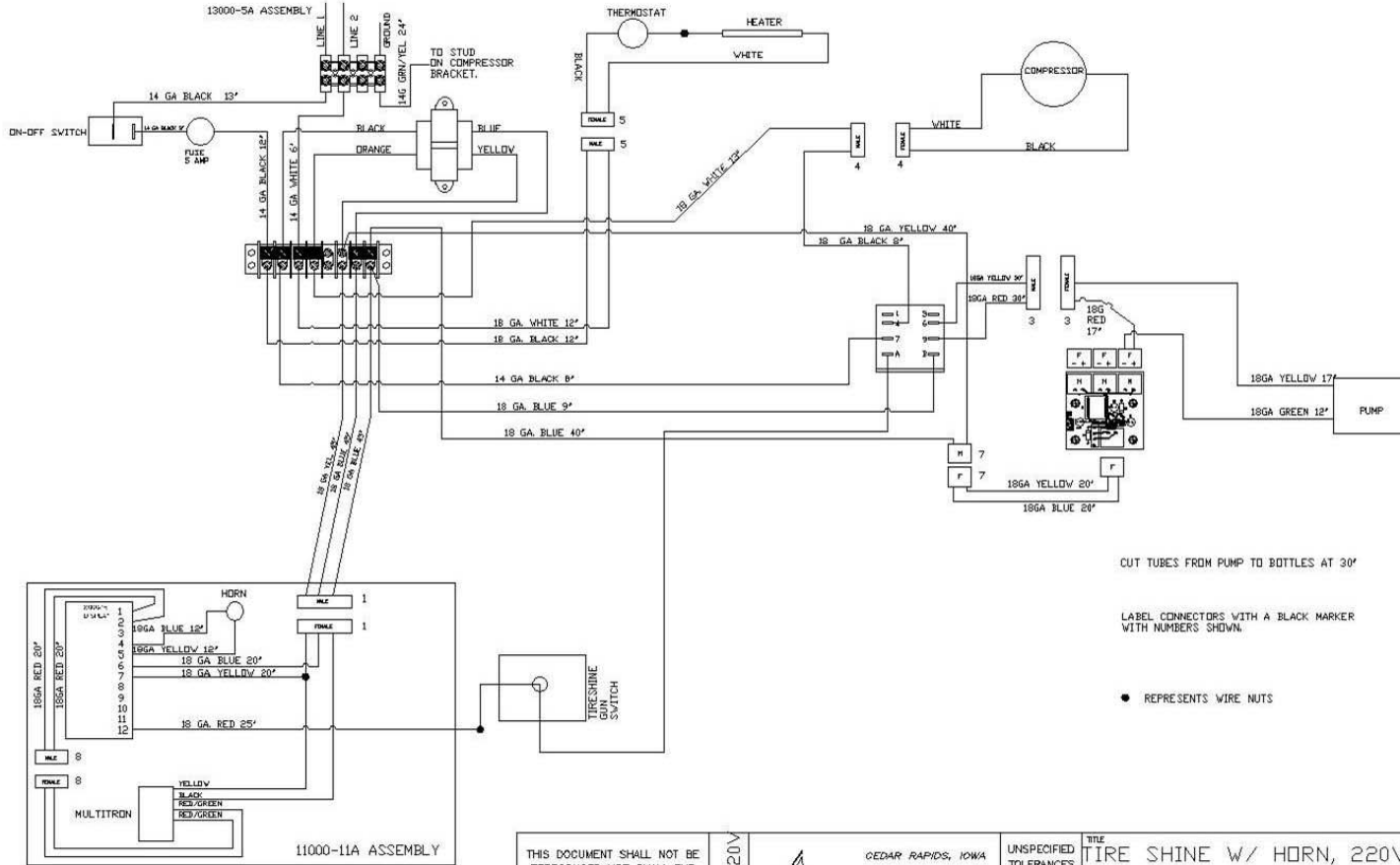
UNSPECIFIED TOLERANCES

TITLE			
FRAG W/ HORN 220V / 50HZ			
DRAWN BY	DATE	SCALE	REL. FOR PROD.
JF	4-08	INCH	-
MATERIAL		PART NO.	REV. LEVEL
PUMP ADDITION		S13000-220V	A

REV	NO.	DESCRIPTION	DATE	BY

PART NO. S16000-220V

CONTROL PLATE ASSEMBLY



THESE CONNECTIONS ONLY USED IF USING MECHANICAL ACCEPTOR TO IN ON SWITCH TO CON ON SWITCH

CUT TUBES FROM PUMP TO BOTTLES AT 30\"/>

LABEL CONNECTORS WITH A BLACK MARKER WITH NUMBERS SHOWN.

● REPRESENTS WIRE NUTS

REV	NO.	DESCRIPTION	DATE	BY

THIS DOCUMENT SHALL NOT BE REPRODUCED NOR SHALL THE INFORMATION THEREIN BE USED BY OR DISCLOSED TO OTHERS EXCEPT AS AUTHORIZED BY J.E. ADAMS INDUSTRIES

PART NO. S16000-220V



UNSPECIFIED TOLERANCES	TITLE TIRE SHINE W/ HORN, 220V @ 50HZ			
DRAWN BY CK	DATE 3-10	SOLE	REL. FOR PROD.	-
MATERIAL	PART NO. S16000-220V	REV. LEVEL		